

Guide to Running LabVIEW Interfaces on Windows 7 64-bit

This guide will provide instructions on how to redirect the location SpinAPI DLL so that it can be properly used by the LabVIEW interface on your 64-bit computer.

Step 1: Open the LabVIEW interface you will be using.

Step 2: In the first screen that appears, there is a text box labeled as follows:

- "Location of spinapi.dll" for PulseBlaster LabVIEW
- "Path to spinapi.dll" for PBLV-DDS and PBLV-DDS-II
- "SpinAPI DLL Path" for PBLV-RP NMR Interface and LabVIEW USB-PTS

Step 3: Press the folder button to the right of this box. See Figure 1 below.

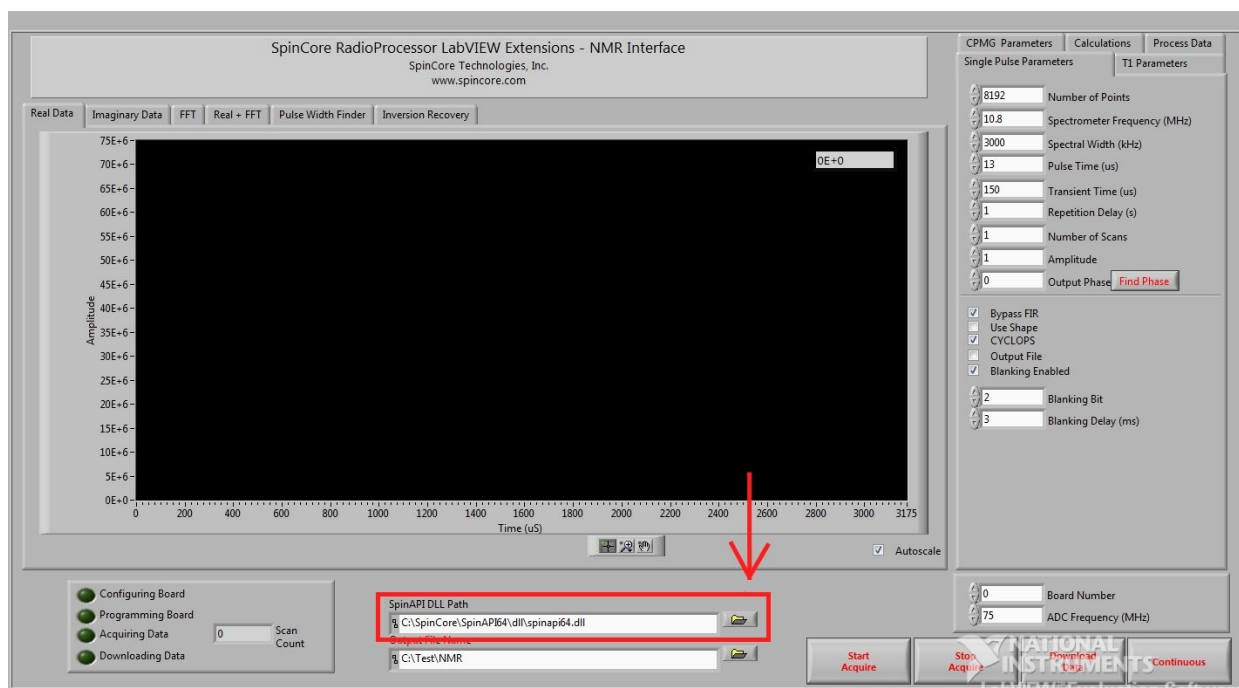


Figure 1: RadioProcessor LabVIEW NMR Interface window with SpinAPI DLL Path box

Step 4: In the directory search menu that appears, go to the location that you installed SpinAPI. By default this directory would be C:\SpinCore\SpinAPI64\dll\. In that location, there is a file called "spinapi64.dll." Click on this file so that it is highlighted, and then click OK in the directory search menu to close it and return to the main LabVIEW interface.

Step 5: You should now be ready to run your experiments through LabVIEW!